



Spencer.

47, Thompson Road, Botanical Gardens, S11 8RA

Buy —

this substantial end of terrace house which is split into two apartments and has exciting potential and is located in a prime spot next to the Botanical Gardens

— from *Spencer*.

- End of terrace house
- Two separate flats with own access
- Two beds on Ground floor
- Four beds on first/second floor
- Sitting tenant in ground floor
- Investment and residential potential
- Off road parking
- Sought after location
- Close to amenities
- EPC Rating D



Offers Around

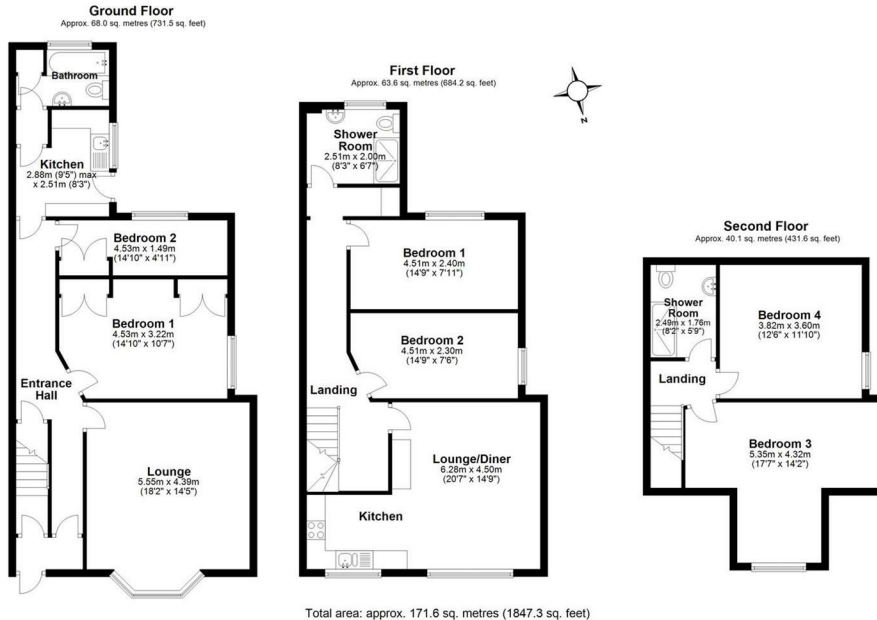
£395,000







Floorplan



All measurements are approximate
Yorkshire EPC & Floor Plans, Ltd
Plan produced using PlanUp.

Spencer.

+44 (0)114 268 3682
info@spencersestateagents.co.uk
469 Ecclesall Road, Sheffield, S118PP
SpencersEstateAgents.co.uk

SpencersAgents
SpencersAgents
SpencersEstateAgents

All enquiries and negotiations conducted via the Spencers office. We are obliged under the Estate Agent Act 1991 to qualify all offers and an independent mortgage consultant will speak to you to substantiate your details. The particulars are set out as a general outline only for guidance and do not constitute part of an offer or contract. Measurements are given in good faith and believed to be correct. Any prospective buyer should satisfy themselves as to the correctness of all statements and should not rely on them as representation of fact. No person in the employment of Spencers has any authority to make or give representation or warranty whatever in relation to this property.

Viewing: Via the Agents
Spencers Agents Ltd, 469 Ecclesall Road, Sheffield S11 8pp | Registered in England No. 7565948