



Spencer.

13A, Whirlow Park Road, Whirlow, S11 9NN

Buy —

A fabulous four bedroom detached house sitting within this enormous plot on this popular road in Whirlow

— from *Spencer.*

- An incredible opportunity to purchase this fabulous house in this huge plot
- With four double bedrooms and a large primary bedroom suite
- A wonderful large reception living room with doors to the garden and excellent privacy
- Separate dining room also with views over the gardens
- Breakfasting kitchen with built in units and access to the large integral garage
- Off street parking for several cars
- With extensive gardens leading down to Ecclesall Woods
- What3Words ///tops.work.silks
- EPC Rating D potential B - Tenure TBC
- Superb potential. Exceptional privacy. Desirable address.



Offers Around

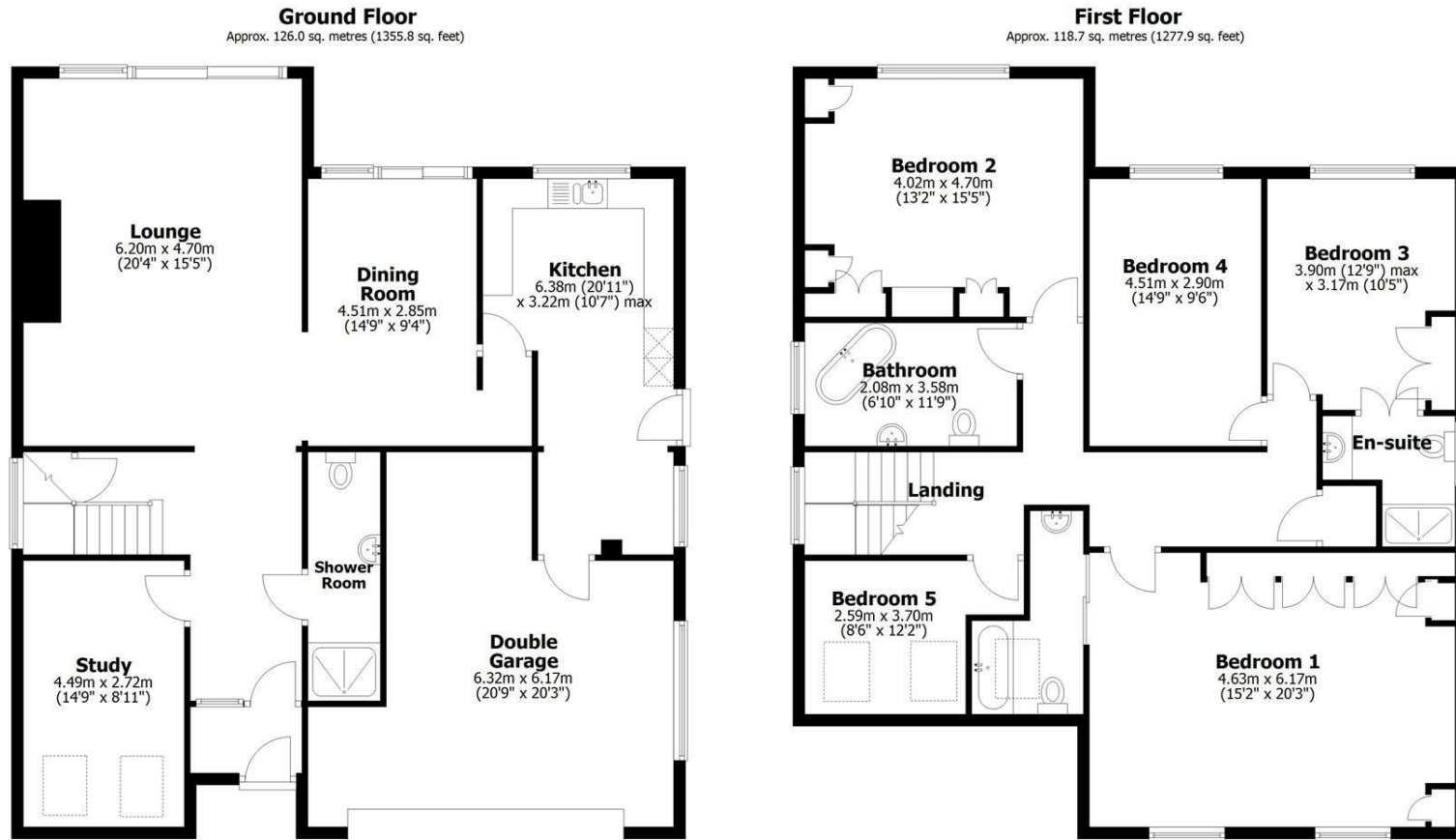
£995,000







Floorplan



Total area: approx. 244.7 sq. metres (2633.7 sq. feet)

All measurements are approximate
Yorkshire EPC & Floor Plans Ltd
Plan produced using PlanUp.

Spencer.

+44 (0)114 268 3682
info@spencersestateagents.co.uk

469 Ecclesall Road, Sheffield, S11 8PP
SpencersEstateAgents.co.uk

SpencersAgents
SpencersAgents
SpencersEstateAgents

All enquiries and negotiations conducted via the Spencers office. We are obliged under the Estate Agent Act 1991 to qualify all offers and an independent mortgage consultant will speak to you to substantiate your details. The particulars are set out as a general outline only for guidance and do not constitute part of an offer or contract. Measurements are given in good faith and believed to be correct. Any prospective buyer should satisfy themselves as to the correctness of all statements and should not rely on them as representation of fact. no person in the employment of Spencers has any authority to make or give representation or warranty whatever in relation to this property.

Viewing: Via the Agents
Spencers Agents Ltd, 469 Ecclesall Road, Sheffield S11 8pp | Registered in England No. 7565948