



Spencer.

147, Abbeydale Road South, Beauchief, S7 2QT

Buy ———
this deceptively spacious five bedroom semi detached family home. In the popular residential area of Millhouses boasting excellent school catchment, parks and woodland.
——— from *Spencer.*

- Deceptively spacious extended stone built Victorian Villa
- Five Double bedrooms and four bathrooms
- Flexible accommodation over four floors
- Ample off-street parking with two electric car charging points
- Within walking distance to Dore & Totley train station and bus services
- Close to excellent sporting facilities, parks and woodlands
- Excellent location for School catchment
- Council Tax D
- EPC Rating -D
- Follow What3Words
[///words.copejolly.](http://www.words.copejolly.com)

Offers Around
£625,000

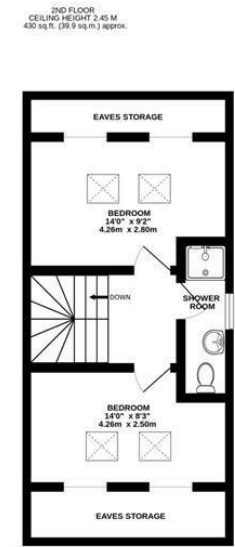
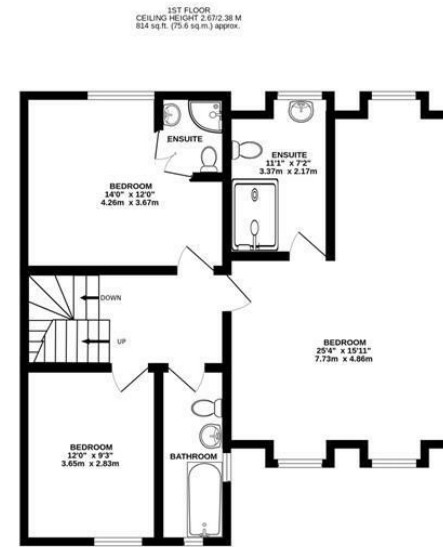
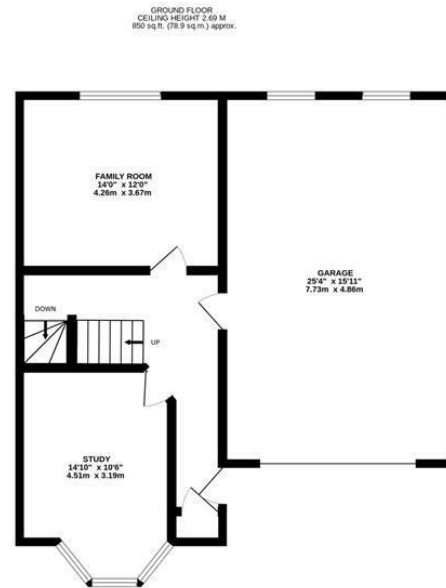
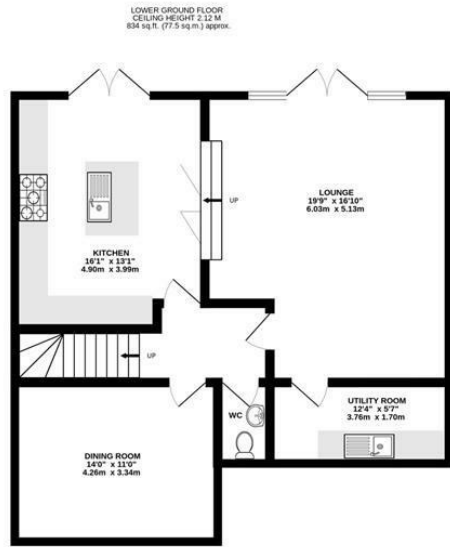








Floorplan



TOTAL FLOOR AREA : 2522sq.ft. (234.3 sq.m.) approx.

Whilst every attempt has been made to ensure the accuracy of the floorplan contained here, measurements of doors, windows, rooms and any other items are approximate and no responsibility is taken for any error, omission or mis-statement. This plan is for illustrative purposes only and should be used as such by any prospective purchaser. The services, systems and appliances shown have not been tested and no guarantee as to their operability or efficiency can be given.

Made with Metropix ©2024



Spencers.

+44 (0)114 268 3682
info@spencersestateagents.co.uk

469 Ecclesall Road, Sheffield, S11 8PP
SpencersEstateAgents.co.uk

SpencersAgents
SpencersAgents
SpencersEstateAgents

All enquiries and negotiations conducted via the Spencers office. We are obliged under the Estate Agent Act 1991 to qualify all offers and an independent mortgage consultant will speak to you to substantiate your details. The particulars are set out as a general outline only for guidance and do not constitute part of an offer or contract. Measurements are given in good faith and believed to be correct. Any prospective buyer should satisfy themselves as to the correctness of all statements and should not rely on them as representation of fact. no person in the employment of Spencers has any authority to make or give representation or warranty whatever in relation to this property.

Viewing: Via the Agents
Spencers Agents Ltd, 469 Ecclesall Road, Sheffield S11 8pp | Registered in England No. 7565948