



Spencer.

Flat 2, 33 Trippet Lane, City, S14EF

Buy —

One double bedroom well presented apartment, in the City Centre!

— from *Spencers*.

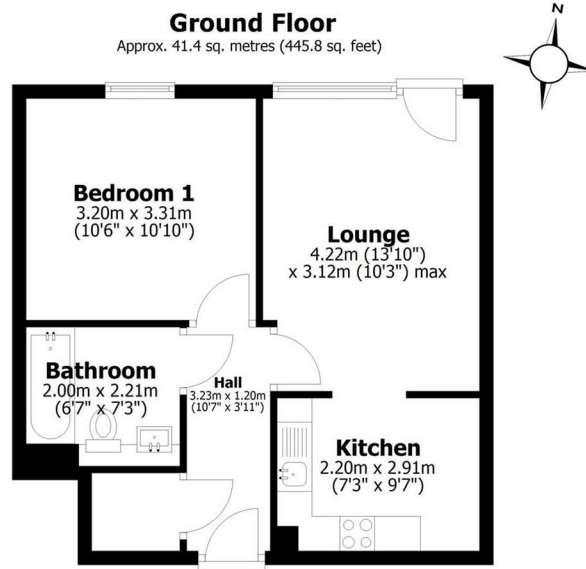
- One double bedroom apartment
- Great location
- Well presented with stylish interiors
- Leasehold - lease 150 years from 2002
- City centre location
- Excellent amenities
- EPC: C
- Service charge currently £1,015 per annum
- Council Tax band A
- No parking space is included



£105,000



Floorplan



Total area: approx. 41.4 sq. metres (445.8 sq. feet)

All measurements are approximate
Yorkshire EPC & Floor Plans Ltd
Plan produced using PlanUp.

Spencer.

+44 (0)114 268 3682
info@spencersestateagents.co.uk

469 Ecclesall Road, Sheffield, S11 8PP
SpencersEstateAgents.co.uk

SpencersAgents
 SpencersAgents
 SpencersEstateAgents

All enquiries and negotiations conducted via the Spencers office. We are obliged under the Estate Agent Act 1991 to qualify all offers and an independent mortgage consultant will speak to you to substantiate your details. The particulars are set out as a general outline only for guidance and do not constitute part of an offer or contract. Measurements are given in good faith and believed to be correct. Any prospective buyer should satisfy themselves as to the correctness of all statements and should not rely on them as representation of fact. No person in the employment of Spencers has any authority to make or give representation or warranty whatever in relation to this property.

Viewing: Via the Agents
Spencers Agents Ltd, 469 Ecclesall Road, Sheffield S11 8pp | Registered in England No. 7565948