



Spencer.

248, Springvale Road, Crookesmoor, S10 1LH

Buy —

A fabulous three bedroomed semi detached house in Crookesmoor

— from *Spencer.*

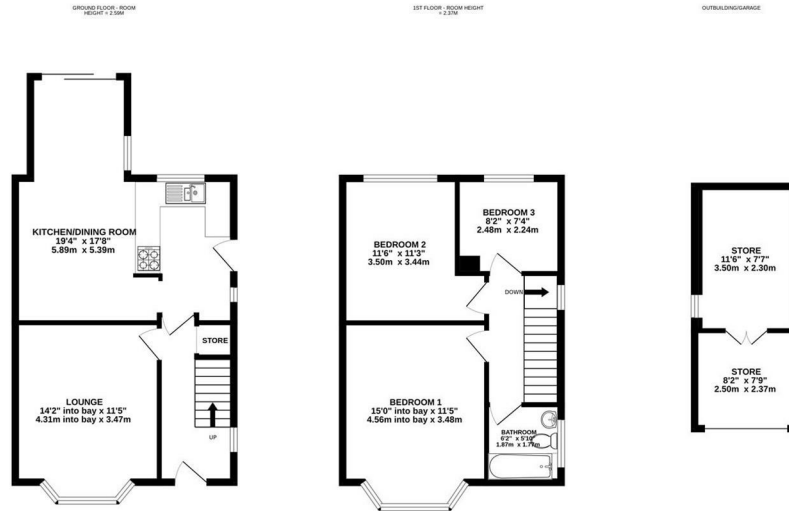
- An extended three bedroomed bay windowed semi detached house
- Located in the heart of Crookesmoor
- Garage / store to the rear of the property
- Gas fired central heating and double glazing
- Modern decor throughout
- Patio area to the rear and steps up to lawned area
- Modern white bathroom suite
- EPC rating D - Council Tax Band C
- Extended dining kitchen
- Space for parking at the front



£340,000



Floorplan



THE GARAGE/OUTBUILDING IS NOT INCLUDED IN THE TOTAL FLOOR AREA

TOTAL FLOOR AREA: 953sq. ft. (88.5 sq.m.) approx.

Whilst every attempt has been made to ensure the accuracy of the floorplan contained here, measurements of doors, windows, rooms and any other areas are approximate and no responsibility is taken for any errors or mis-statements. This plan is for illustrative purposes only and should be used as such by any prospective purchaser. The services, systems and appliances shown have not been tested and no guarantee as to their operation or efficiency can be given.
Made with Metrepx C024



Spencer.

+44 (0)114 268 3682

info@spencersestateagents.co.uk

469 Ecclesall Road, Sheffield, S11 8PP

SpencersEstateAgents.co.uk

T SpencersAgents

@ SpencersAgents

f SpencersEstateAgents

All enquiries and negotiations conducted via the Spencers office. We are obliged under the Estate Agent Act 1991 to qualify all offers and an independent mortgage consultant will speak to you to substantiate your details. The particulars are set out as a general outline only for guidance and do not constitute part of an offer or contract. Measurements are given in good faith and believed to be correct. Any prospective buyer should satisfy themselves as to the correctness of all statements and should not rely on them as representation of fact. No person in the employment of Spencers has any authority to make or give representation or warranty whatever in relation to this property.

Viewing: Via the Agents

Spencers Agents Ltd, 469 Ecclesall Road, Sheffield S11 8pp | Registered in England No. 7565948