



Spencer.

42, Harley Road, Ecclesall, S11 9SE

Buy —
this stunning three bedroom semi-detached family home, with off street parking, garage and beautiful long garden in this highly desirable location.

— from *Spencer.*

- Available with no onward chain
- Fabulous three bedroom semi detached home
- Separate lounge
- Stunning open plan kitchen snug/dining room
- Bifold doors to the beautiful garden
- Garage and utility room
- Off Street parking
- Council Tax Banding-E
- EPC Rating-C
- [What3words///swing.swept.emr](https://www.what3words.com/swing.swept.emr)

Offers Around
£695,000

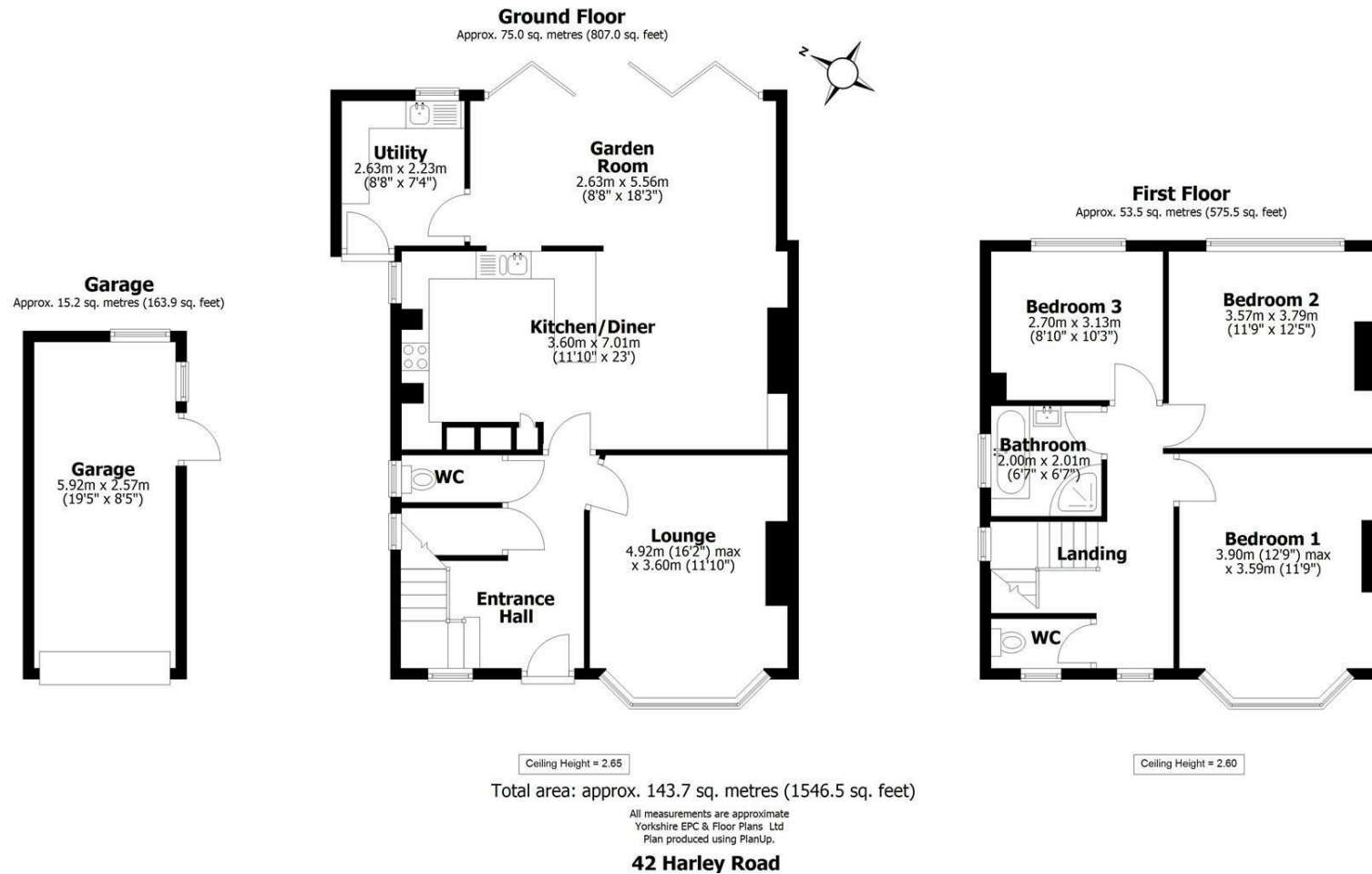








Floorplan



Spencer.

+44 (0)114 268 3682
info@spencersestateagents.co.uk

469 Ecclesall Road, Sheffield, S11 8PP
SpencersEstateAgents.co.uk

SpencersAgents
SpencersAgents
SpencersEstateAgents

All enquiries and negotiations conducted via the Spencers office. We are obliged under the Estate Agent Act 1991 to qualify all offers and an independent mortgage consultant will speak to you to substantiate your details. The particulars are set out as a general outline only for guidance and do not constitute part of an offer or contract. Measurements are given in good faith and believed to be correct. Any prospective buyer should satisfy themselves as to the correctness of all statements and should not rely on them as representation of fact. no person in the employment of Spencers has any authority to make or give representation or warranty whatever in relation to this property.

Viewing: Via the Agents
Spencers Agents Ltd, 469 Ecclesall Road, Sheffield S11 8pp | Registered in England No. 7565948