



Spencer.

26, Belmonte Gardens, Norfolk Park, S2 2QY

Buy —

This beautifully located ground floor apartment with private entrance has two ample bedrooms, a private garden, residents parking and garage.

— from *Spencer.*

- Available with no chain
- Ground floor apartment
- Two bedrooms
- Lounge dining room
- Separate kitchen
- Gardens front and rear
- Residents parking and garage
- Council Tax Band-A
- EPC Rating-
- What3Words///wells.nests.pills



Offers Around

£125,000



Floorplan

26 BELMONT GARDENS

APPROXIMATE GROSS INTERNAL AREA = 51.0 SQ M / 549 SQ FT

GARAGE = 13.1 SQ M / 141 SQ FT

TOTAL = 64.1 SQ M / 690 SQ FT

(EXCLUDING EXTERNAL CUPBOARD)

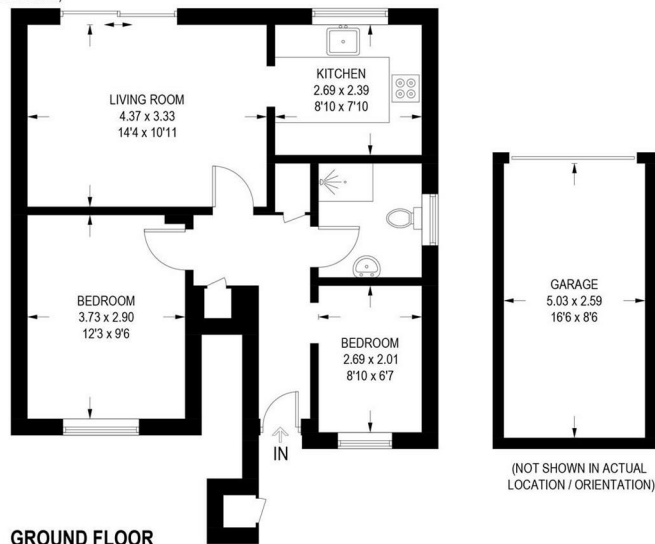


Illustration for identification purposes only, measurements are approximate, not to scale.

Spencer.

+44 (0)114 268 3682

info@spencersestateagents.co.uk

469 Ecclesall Road, Sheffield, S11 8PP

SpencersEstateAgents.co.uk

SpencersAgents

SpencersAgents

SpencersEstateAgents

All enquiries and negotiations conducted via the Spencers office. We are obliged under the Estate Agent Act 1991 to qualify all offers and an independent mortgage consultant will speak to you to substantiate your details. The particulars are set out as a general outline only for guidance and do not constitute part of an offer or contract. Measurements are given in good faith and believed to be correct. Any prospective buyer should satisfy themselves as to the correctness of all statements and should not rely on them as representation of fact. No person in the employment of Spencers has any authority to make or give representation or warranty whatever in relation to this property.

Viewing: Via the Agents

Spencers Agents Ltd, 469 Ecclesall Road, Sheffield S11 8PP | Registered in England No. 7565948