



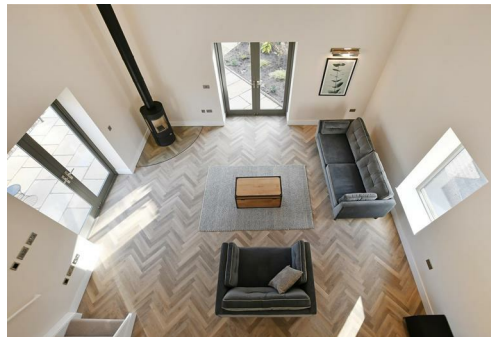
Spencer.

Shatton Farm, Shatton Lane, Hope Valley, S33 0BG

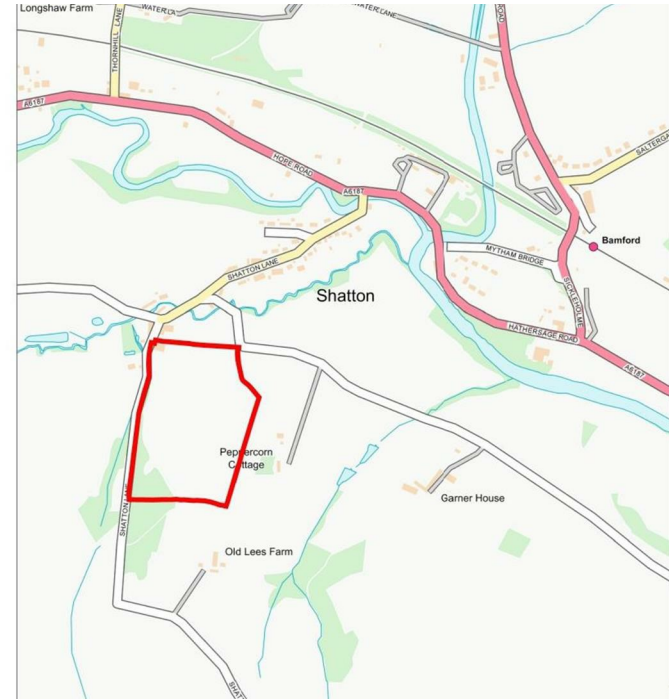
Buy —
a sensational fully modernised & developed
farmhouse with epic proportions & immaculate finish
in this wonderful hamlet between Castleton &
Hathersage
— from *Spencer.*

- Fully redeveloped farm conversion with underfloor heating and all mod-cons in over 4100 square feet of accommodation
- Brand new kitchen with large island, separate pantry and huge open plan living space with built-in banquette seating
- Study area and large living room with mezzanine bedroom four with en-suite shower room
- Three large double bedrooms with en-suites, the master bedroom having a dressing area and amazing views
- Ground source heating, double glazing and ten year warranty
- Utility room, glass entrance hallway and two downstairs WCs
- Extensive private gardens and land surrounding of approx. 17 acres
- Off-street parking for many vehicles and opportunity for equestrian facilities
- EPC Rating - C Council Tax Band - F
- What3Words///whizzing.crackling.repayment

Offers Around
£2,200,000

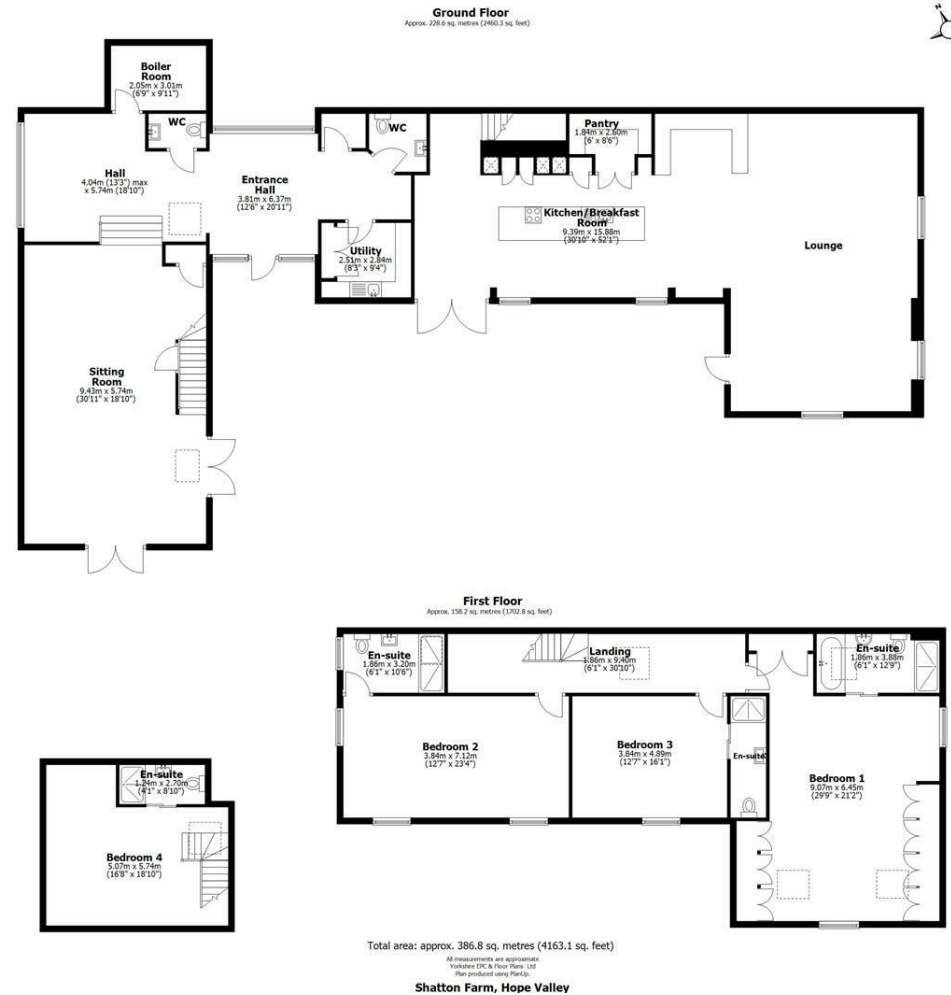








Floorplan



Spencer.

+44 (0)114 268 3682
info@spencersestateagents.co.uk

469 Ecclesall Road, Sheffield, S11 8PP
SpencersEstateAgents.co.uk

SpencersAgents
SpencersAgents
SpencersEstateAgents

All enquiries and negotiations conducted via the Spencers office. We are obliged under the Estate Agent Act 1991 to qualify all offers and an independent mortgage consultant will speak to you to substantiate your details. The particulars are set out as a general outline only for guidance and do not constitute part of an offer or contract. Measurements are given in good faith and believed to be correct. Any prospective buyer should satisfy themselves as to the correctness of all statements and should not rely on them as representation of fact. no person in the employment of Spencers has any authority to make or give representation or warranty whatever in relation to this property.

Viewing: Via the Agents
Spencers Agents Ltd, 469 Ecclesall Road, Sheffield S11 8pp | Registered in England No. 7565948