



Spencer.

66, Clarke Grove Road, Botanical Gardens, S10
2NI

Buy —

a large investment of six rented apartments
in this incredible location perfect for young
professionals and students

— from *Spencer.*

- A large detached Victorian residence separated into six apartments
- Six good-sized two bed apartments
- All properties are rented on ASTs bar one (top floor) on a lifetime tenancy
- Incredible location in S10 close to Ecclesall Road and the hospitals
- All properties EPC - C
- Off street parking for four vehicles to the front and on street permit parking
- Rear full height fire escape and rear courtyard
- Large cellars
- Period features throughout
- What3Words///risk.intent.names

Offers Around

£875,000

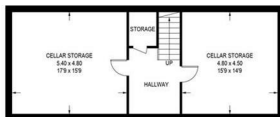




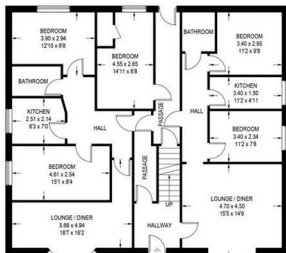
Floorplan

66 CLARKEGROVE ROAD

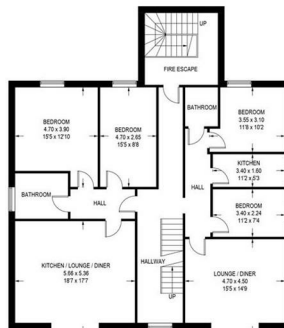
APPROXIMATE GROSS INTERNAL AREA = 493.4 SQ M / 5311 SQ FT



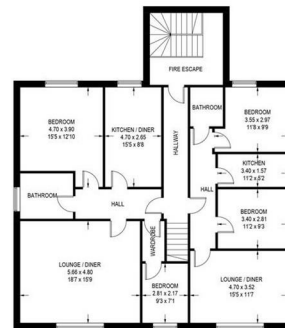
BASEMENT FLOOR
57.3 SQ M / 617 SQ FT



GROUND FLOOR
137.4 SQ M / 1479 SQ FT



FIRST FLOOR
150.5 SQ M / 1620 SQ FT



SECOND FLOOR
148.2 SQ M / 1595 SQ FT

Illustration for identification purposes only, measurements are approximate, not to scale.

Spencer.

+44 (0)114 268 3682
info@spencersestateagents.co.uk

469 Ecclesall Road, Sheffield, S11 8PP
SpencersEstateAgents.co.uk

SpencersAgents
SpencersAgents
SpencersEstateAgents

All enquiries and negotiations conducted via the Spencers office. We are obliged under the Estate Agent Act 1991 to qualify all offers and an independent mortgage consultant will speak to you to substantiate your details. The particulars are set out as a general outline only for guidance and do not constitute part of an offer or contract. Measurements are given in good faith and believed to be correct. Any prospective buyer should satisfy themselves as to the correctness of all statements and should not rely on them as representation of fact. No person in the employment of Spencers has any authority to make or give representation or warranty whatever in relation to this property.

Viewing: Via the Agents
Spencers Agents Ltd, 469 Ecclesall Road, Sheffield S11 8PP | Registered in England No. 7565948