



Spencer.

2, Gillott Road, Fox Hill, S6 1JQ

Buy ———  
a tidy two bedroomed end terraced  
house with lovely courtyard garden

——— from *Spencer.*

- End terraced house on a quiet cul-de-sac
- Two double bedrooms
- Bathroom with bath with shower
- Living room
- Dining kitchen
- Courtyard style enclosed garden
- EPC Rating D - Potential B
- Council Tax Band A
- What3Words  
///across.studio.forks
- No Chain



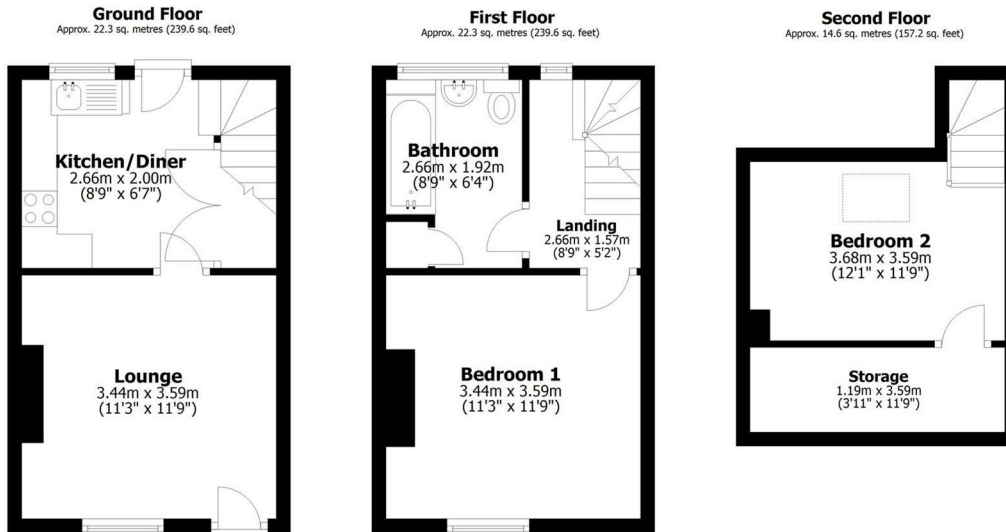
Offers Around

**£145,000**





# Floorplan



Total area: approx. 59.1 sq. metres (636.4 sq. feet)

All measurements are approximate  
Yorkshire EPC & Floor Plans Ltd  
Plan produced using PlanUp.

**2 Gillott Road**

**Spencer.**

+44 (0)114 268 3682  
info@spencersestateagents.co.uk

469 Ecclesall Road, Sheffield, S118PP  
SpencersEstateAgents.co.uk

**SpencersAgents**  
**SpencersAgents**  
**SpencersEstateAgents**

All enquiries and negotiations conducted via the Spencers office. We are obliged under the Estate Agent Act 1991 to qualify all offers and an independent mortgage consultant will speak to you to substantiate your details. The particulars are set out as a general outline only for guidance and do not constitute part of an offer or contract. Measurements are given in good faith and believed to be correct. Any prospective buyer should satisfy themselves as to the correctness of all statements and should not rely on them as representation of fact. No person in the employment of Spencers has any authority to make or give representation or warranty whatever in relation to this property.

Viewing: Via the Agents  
Spencers Agents Ltd, 469 Ecclesall Road, Sheffield S11 8PP | Registered in England No. 7565948