



Spencer.

24, Endcliffe Hall Avenue, Endcliffe, S10 3EL

Buy —

A superb detached four bedroomed house in Endcliffe with excellent proportions and double garage in an ample plot ideal for families

— from *Spencer.*

- A super detached house with double garage in the heart of S10
- Four double bedrooms, the main bedroom with en-suite, and separate study
- Dual aspect living room with doors to the rear enclosed garden
- Separate dining room with doors to the living room and modern fitted breakfast kitchen
- Utility room, parking for several cars, downstairs WC, double glazing, alarm and gas central heating
- An excellent family home on the open market for the first time since it was built
- Close to the wonderful Endcliffe Park
- Sheffield Council Tax Band - G
- EPC Rating
- What3Words///bills.boots.enjoyable

Offers Around

**£775,000**







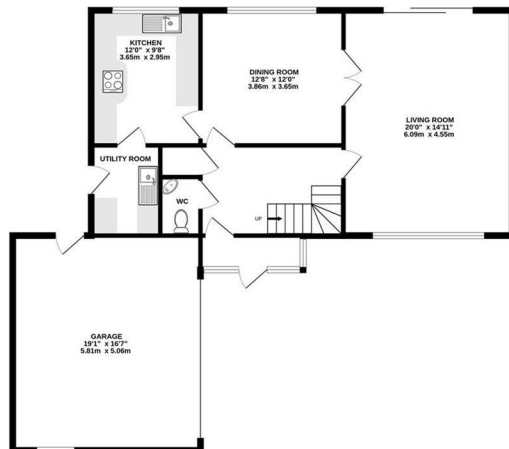




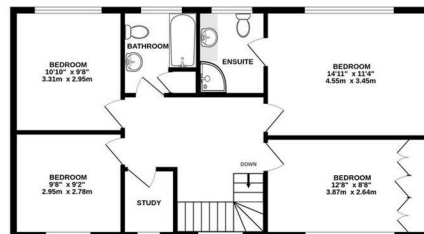


# Floorplan

GROUND FLOOR  
1089 sq.ft. (101.2 sq.m.) approx.



1ST FLOOR  
745 sq.ft. (69.2 sq.m.) approx.



TOTAL FLOOR AREA : 1834 sq.ft. (170.4 sq.m.) approx.

Whilst every attempt has been made to ensure the accuracy of the floorplan contained here, measurements of doors, windows, rooms and any other items are approximate and no responsibility is taken for any error, omission or mis-statement. This plan is for illustrative purposes only and should be used as such by any prospective purchaser. The services, systems and appliances shown have not been tested and no guarantee as to their operability or efficiency can be given.

Made with Metropix ©2025



**Spencer.**

+44 (0)114 268 3682  
info@spencersestateagents.co.uk

469 Ecclesall Road, Sheffield, S11 8PP  
SpencersEstateAgents.co.uk

**SpencersAgents**  
**SpencersAgents**  
**SpencersEstateAgents**

All enquiries and negotiations conducted via the Spencers office. We are obliged under the Estate Agent Act 1991 to qualify all offers and an independent mortgage consultant will speak to you to substantiate your details. The particulars are set out as a general outline only for guidance and do not constitute part of an offer or contract. Measurements are given in good faith and believed to be correct. Any prospective buyer should satisfy themselves as to the correctness of all statements and should not rely on them as representation of fact. No person in the employment of Spencers has any authority to make or give representation or warranty whatever in relation to this property.

Viewing: Via the Agents  
Spencers Agents Ltd, 469 Ecclesall Road, Sheffield S11 8PP | Registered in England No. 7565948