



*Spencer.*

**51, Den Bank Crescent, Sheffield, S10 5PB**

Buy ———  
this superbly renovated and upgraded four bedroom  
semi detached family home, with off street parking,  
larger than average garden and some of the most  
priceless views.  
————— from *Spencer.*

- Superior high spec, four bedroom semi detached home
- Master suite with extensive view and family bathroom
- Bay windowed lounge
- Open plan kitchen diner and family room
- Separate utility room and playroom/office
- Large rear garden with elevated decked seating area
- Stunning views and excellent family location
- Council Tax Band-C
- EPC Rating-C
- [What3words///burst.locals.show](https://www.what3words.com/burst.locals.show)



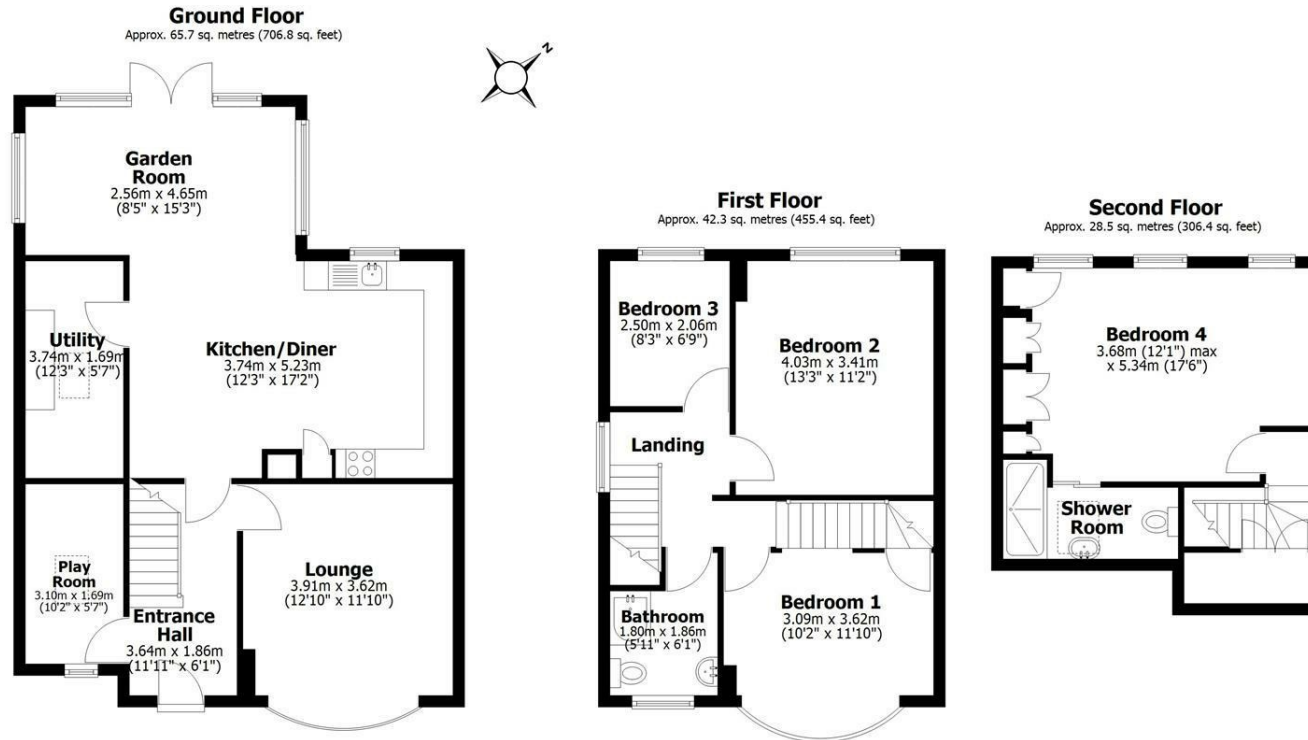
Offers Around  
**£595,000**







# Floorplan



Total area: approx. 136.4 sq. metres (1468.6 sq. feet)

All measurements are approximate  
Yorkshire EPC & Floor Plans Ltd  
Plan produced using PlanUp.

**51 Den Bank Crescent**

**Spencers.**

+44 (0)114 268 3682  
info@spencersestateagents.co.uk

469 Ecclesall Road, Sheffield, S11 8PP  
SpencersEstateAgents.co.uk

SpencersAgents  
SpencersAgents  
SpencersEstateAgents

All enquiries and negotiations conducted via the Spencers office. We are obliged under the Estate Agent Act 1991 to qualify all offers and an independent mortgage consultant will speak to you to substantiate your details. The particulars are set out as a general outline only for guidance and do not constitute part of an offer or contract. Measurements are given in good faith and believed to be correct. Any prospective buyer should satisfy themselves as to the correctness of all statements and should not rely on them as representation of fact. No person in the employment of Spencers has any authority to make or give representation or warranty whatever in relation to this property.

Viewing: Via the Agents  
Spencers Agents Ltd, 469 Ecclesall Road, Sheffield S11 8pp | Registered in England No. 7565948